

Historical Heroines and Villainesses

In class you have studied some of history's famous and notorious women. Your task is to work by yourself or in pairs to research another ONE historical heroine or villainess from the list below. Students in the class must research a different personality from others in the class.

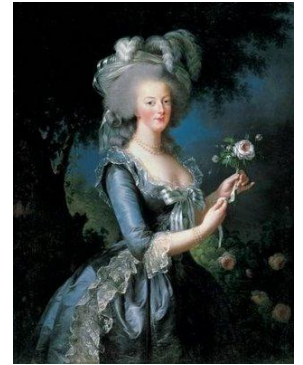


Figure 1 Marie Antoinette

The Task

Your task is to conduct comprehensive research on ONE female personality and compile a thorough and accurate biography of this woman to be published on the class wikipage at <http://historicalheroines.wikispaces.com>.

You will need to include a variety of visual stimuli (maps, diagrams, illustrations, photographs, charts etc), a timeline of significant events in the woman's life, a map showing where she was born, lived, travelled etc, an annotated recommended reading list.

You will also need to provide some 'text book activities' at the bottom of your wikipage which may include a range of tasks such as Q & A, true or false?, multiple choice, creative tasks (writing, empathy, poetic etc), research tasks, crosswords etc. Discovery Puzzlemaker is an excellent site for creating some 'fun' puzzles.

Keep in mind that after completion, your peers (potentially from both classes!) will be exploring your site and completing your activities in order to

- learn about your famous person and
- evaluate and assess your research and final work.



Figure 3 Catherine the Great



Figure 2 Cleopatra



Figure 4 Cixi

What to Include

- A catchy title or slogan about your significant personality
- A biographical profile including:
 - Family background, early life and influences
 - Career / occupation and major noteworthy achievements
 - Death
- Explanation of the legacy and impact of her for history; why did she make history?
- Timeline of their life and career including at least 8 dates of significance
- Map of their life: show where they were born, lived, travelled etc
- Select and include THREE primary sources about this person (these sources may be photos, decrees, artefacts, etc). For each source:
 - Identify the source in your own caption: what is it? When and where was it made or from?
 - Explain in 4-6 sentences what this source can reveal to historians about the woman's life, career and/or legacy.
 - Provide a brief discussion of 5-10 sentences describing the different perspectives of this person based on the sources.
- Picture Gallery – with captions
- Recommended Reading List
- A variety of activities (at least 5) for peers to complete – these can include comprehension questions, cloze passages, crosswords, creative tasks
- Ensure authorship is specified!



Figure 5 Boudicca



Figure 6 Tilly Devine



Figure 7 Elizabeth Bathory

Presentation

You will need to apply to 'join' the wikipage so that your teacher can approve you. Once joined up and signed in, all editing members can open their page and 'EDIT' it much like a Word document.

The wikipage will be a **one scrolling page document** where you will include all your information and activities. You may set them out in sections with hyperlinks, or integrate pictures and timeline with the text. You might have 'complete as you go' questions or have the activities attached to the end.

Ensure that your wikipage is CLEAR and easy to NAVIGATE, well set out and structured so that your teacher and peers can easily access and find information.

The wikipage chosen by the History Faculty as the most creative, informative and intelligent response will get a prize!

Significant Historical Women



Figure 8 Eva Peron



Figure 9 Benazir Bhutto



Figure 10 Jehanne D'Arc

Hatshepsut – <i>Female pharaoh</i>	Marie Antoinette – <i>extravagant queen of France</i>	Amelia Earhart <i>pioneering pilot</i>
Boudicca <i>English warrior queen</i>	Elizabeth Bathory – <i>a diabolical countess with a taste for blood</i>	Mother Theresa – <i>missionary and peace prize winning nun</i>
Cleopatra – <i>queenly ruler of Egypt</i>	Shi Xianggu – <i>fearsome pirate</i>	Germaine Greer <i>leading 70s feminist and author</i>
Agrippina the Younger – <i>ruthless princess and mother of an Emperor</i>	Mary Ann Cotton – <i>The Black Widow</i>	Jiang Qing – also known as Madame Mao – <i>iron fisted ruler of China</i>
Mary Magdalene – <i>harlot or Jesus' wife?</i>	Cixi – <i>the Dragon Empress</i>	Saint Mary MacKillop – <i>Aussie nun and saint</i>
Saint Jehanne D'Arc / Joan of Arc – <i>witch or saviour of France?</i>	Typhoid Mary – <i>a cook who spread an epidemic</i>	Phoolan Devi – <i>bandit queen</i>
Eleanor of Aquitaine – <i>dubbed the Queen of Europe</i>	Mata Hari – <i>stripper and possibly spy</i>	Chicago May – <i>queen of crooks</i>
Elizabeth I – <i>the powerful Virgin Queen</i>	Tilly Devine – <i>Aussie 1920s gangster</i>	Benazir Bhutto – <i>first woman to rule a modern Islamic country</i>
Catherine the Great – <i>Empress of Russia</i>	Emmeline Pankhurst – <i>British suffragette</i>	Eva Peron – <i>Argentinian politician and heroine</i>
Lucie Aubrac <i>- faced off with the Butcher of Lyon</i>	Florence Nightingale – <i>pioneering nurse</i>	Soujourner Truth / Isabella Baumfree - <i>Ex-slave who helped free other slaves in USA</i>

Cooperative Project Marking Criteria

There will be THREE components to the marking of this task:

Students will anonymously mark a randomly assigned wikipage (not their own) according to the same criteria as a teacher. Students will also self-evaluate their own page. The third marking will be done by the teacher. All three evaluations will use the following criteria.

What the Grades Mean:

- **A- Excellent** approx.. 90-100%– of superior and sophisticated standard; great attention to detail and great care in presentation.
- **B –Very Good** approx. 70-89%– attention to detail, care in presentation
- **C – Satisfactory** approx.. 50-69%– is completed appropriately and clearly. All aspects completed to a satisfactory standard.
- **D –Basic** approx. 30-49%-
- **E –Limited** under 30%-

	A Excellent	B Very Good	C Satisfactory	D Basic	E Limited
ICT Presentation: <ul style="list-style-type: none"> - the wikipage is clearly set out and easy to navigate. - It is not cluttered or confusing. - There is a clear organisation, effective labelling and links etc - there is a balance of text-graphics. 					
Content: <ul style="list-style-type: none"> - All areas of the assignment have been addressed and in substantial detail/depth - The information is clearly worded and appears to be the students' own work (not plagiarised) 					
Activities <ul style="list-style-type: none"> - The tasks are age-appropriate - The tasks require a range of knowledge and skills – they are not all of one type - The questions are clearly worded 					
Reading List <ul style="list-style-type: none"> - The reading list reflects wide research - The reading list is referenced correctly - The sources are annotated and reflect good critiquing by the students 					
Comments about the positive aspects and areas for improvement					Final Grade

Assessment Component Notification

Assessment 3

Week 8 Term 2

Weighting: 25%

Date:

Topic: Historical Heroines and Villainesses

Format of Task: Written exposition

You will be required to write an exposition (essay) response on the famous woman you studied and created a wikipage of for the topic of Heroines and Villainesses.

The specific essay question will be provided to you at a later date.

Whereas the wikipage task is a cooperative learning project, the exposition assessment will be completed individually.

Note that the assessment weighting applies only to the in-class essay written in week 8 – Not the wikipage project.

See attached information and scaffolds about how to write an essay / exposition.